



The Corso™ Cleantech is a push trolley in stainless steel. It allows the anchoring of lifting devices* of which the Tralift™ Cleantech and to move a load on a beam in I or H profil.

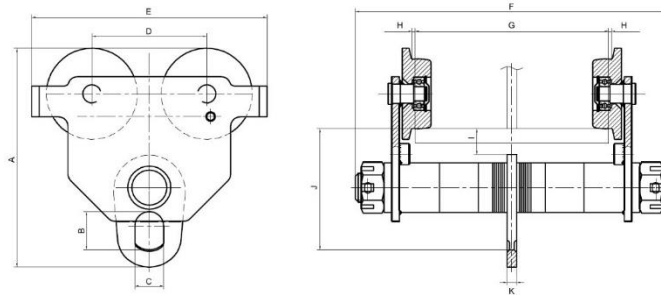
* Some informations on the chain hoists of Tralift™ range can be obtained on simple request to Tractel® or on the website www.tractel.com

APPLICATIONS

- Food industry
- Pharmaceutical
- Cosmetic
- Aggressive environment (seaside, dusty)
- Clean room

TECHNICAL CHARACTERISTICS

- Compact and light device,
- Side plates with end stop and fall arrest device,
- Components in stainless steel :
 - Side plates
 - Running wheels
 - Threaded bar
 - Spacers
 - Anchors point
 - Nuts
- High performance grease compatible with food industry (Mobilgrease FM 222)
- Designed and built to withstand dynamic tests at 1.1 x WLL*, static at 1.5 x WLL* and to guarantee a minimum mechanical resistance of 4 x WLL



WLL** (t)	Dimensions (mm)											Rc.*** (mm)	Weight (kg)
	A	B	C	D	E	F	G	H	I	J	K		
0.5	187	32	25	100	199	245	50-152	1,5-3	29,5	104	8	1 000	5,8
1	229	40	30	120	246	327	64-203	1,5-3	27	127	10	1 000	12,0
2	268	52	38	132	276	345	88-203	1,5-3	27	150	12	1 100	19,5

** WLL = Working Load Limit

*** Rc. = Minimum of radius of curve

APPLICABLE STANDARDS

- European directive 2006/42/CE
- EN13157+A1: 2009
- The Supply of Machinery (Safety) Regulations 2008 (SI 2008/1597) of the United Kingdom Machinery directive

PRODUCTS CODE AND LOGISTIC INFORMATIONS

Code	Description	Code EAN	Poids Net	Poids (incl. emballage)	Dimensions emballage
294869	Corso trolley Cleantech 0,5t	3600232948698	5,8 kg	6,3 kg	27 x 22 x 17 cm
294879	Corso trolley Cleantech 1t	3600232948797	12 kg	12,5 kg	35 x 27 x 20 cm
294889	Corso trolley Cleantech 2t	3600232948896	19,5 kg	20,0 kg	31 x 20 x 24 cm